

THE VALI-DATE PLUS SERIES

Performance Qualified to Help Satisfy Qualification & Validation Requirements

- **LR-5 digital temperature microprocessor controller** (see pg. 1)
Adaptive control that seeks out and finds the most efficient temperatures at which to turn on and off the refrigeration system and still maintain set temperatures.
- **Multi-point temperature mapping** via LRP's NIST traceable data acquisition, assures consistent, reproducible operational qualifications that should satisfy the most stringent Validation and/or Quality Assurance Team.
- **Concise Operation Manuals** make the commissioning as well as the Installation Qualifications virtually effortless. If provided with a Requirements Document, LRP will make every effort to fulfill or exceed each condition.
- **Accu-Test Quality Control Test Certificates**
Every LRP unit is quality and temperature tested at the end of production and before shipping to customer. This double testing helps ensure accurate temperature performance for added product protection.



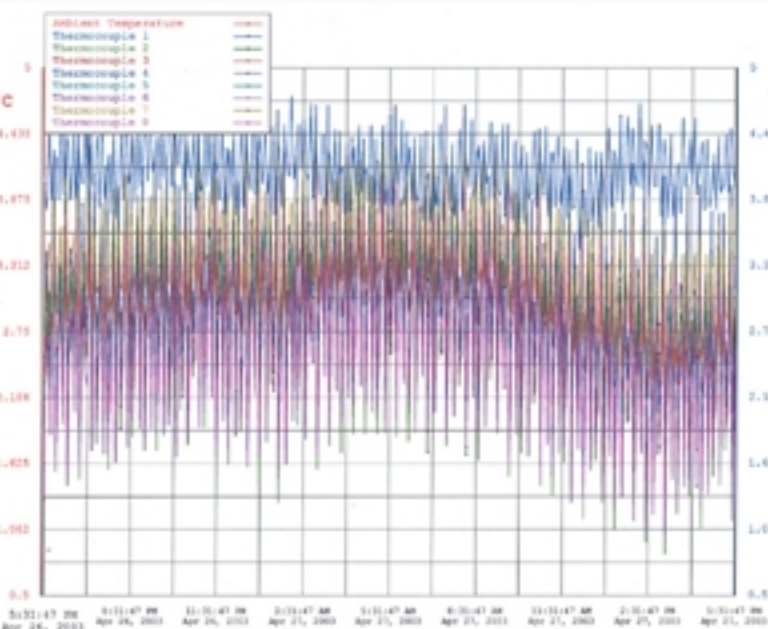
Vali-Date Plus Standard Features

- LR-5 Microprocessor Temperature Controller offers more precise temperature settings and maintenance over mechanical thermostats (see pg. 1)
- Digital Display
- Audible and Visual High & Low Temperature Alarm
- Door Ajar Alarm
- Battery Back-up for audible and visual alarms
- Power Failure Alarm
- Sensor Error Alarm
- Remote Alarm Contacts
- High & Low Non-volatile Temperature Memory with reset
- Audible Alarm Mute Button
- 120 VAC Operation
- Accessible Exterior Power Switch on PQR & PQ-AF Units
- Temperature Range:
Refrigerators: 0° - 10°C - Factory Preset to 4°C
Freezers: -20°C Min. Average - Factory Preset to -20°C
(Manual and Auto Defrost models available)
- 300 Series Stainless Steel Interior/Exterior (Excludes PQ-MF Units)
- Energy efficient, double pane vacuum insulated glass doors with Solarban[®], on all glass door units
- Inner "Fast Freeze Compartments"[™] with doors for superior temperature maintenance and recovery (Equipped only on PQ-MF Series Manual Defrost Freezers)
- Automatic Defrost Refrigerators with built in electric heater assisted condensate evaporator
- Interior Lighting (Excludes PQC-13SSM)
- Keyed Door Locks
- Swivel Casters or Caster Platform
- CFC-Free refrigerants, foam insulation and environmentally friendly packaging

Vali-Date Plus Accessories

(See Accessories Page 20)

- Electrical Outlets - Available only on Stainless Steel Units
- Access Ports - Available only on Stainless Steel Units
- Additional Shelves - Available only on Stainless Steel Units
- 120 VAC Operated, Flush mounted, 4" Circular Chart Temperature Recorder (available for all uprights)
- Storage Boxes & Grids
- CryoGloves



VALI-DATE PLUS

Model	Cu. Ft.	Temp	Doors	Shelves	Usable Int. Dim.			Ext. Dim.			H.P.	Amps	BTU/hr	Weight	Ship Weight
					W"	D"	H"	W"	D"	H"					
Refrigerators															
PQ-R23S	23	4°C	1 swing	3	22	24	56	27	30	79"	1/3	8	2174	275	315
PQ-R49S	49	4°C	2 swing	6	50	25	56	54	30	79"	1/2	10	3217	441	481
PQ-R72S	72	4°C	3 swing	9	75	25	56	78	30	80"	1/2	12	4314	615	665
PQ-R23G	23	4°C	1 swing	3	22	24	56	27	30	79"	1/3	8	2174	312	352
PQ-R49G	49	4°C	2 swing	6	50	25	56	54	30	79"	1/2	10	3217	533	573
PQ-R72G	72	4°C	3 swing	9	75	25	56	78	30	80"	1/2	12	4314	712	762

*Exterior height does not include 5" for caster height

VALI-DATE PLUS

Model	Cu. Ft.	Defrost	Temp	Doors	Shelves	Usable Int. Dim.			Ext. Dim.			H.P.	Amps	BTU/hr	lbs.	Ship lbs.
						W"	D"	H"	W"	D"	H"					
Freezers																
Exterior height does not include 5" for caster height																
PQ-AF23	23	Auto	-20°C	1 swing	3	22	24	56	27	30	79	1/2	9	3217	312	352
PQ-AF49	49	Auto	-20°C	2 swing	6	50	25	56	54	30	79	3/4	14	4725	509	550
PQ-MF2020	20	Manual	-20°C	1 swing	4 Fixed	27	18	57	32	29	77	1/4	5	770	255	295
PQ-MF2920	29	Manual	-20°C	1 swing	4 Fixed	32	26	65	35	32	84	1/3	5	2174	308	348
Refrigerator / Freezer Combination																
Model	Cu. Ft.	Defrost	Temp	Doors	Shelves-Drawers	Usable Int. Dim. Ref/Free			Ext. Dim.			H.P.	Amps	BTU/hr	Ship lbs.	
		Ref/Free	Ref/Free	Ref / Fre	Ref / Fre	W"	D"	H"	W"	D"	H"	Ref/Free	Ref/Free	Ref/Free	lbs.	
PQC-13SSM	6.5/6.5	Auto/Manual	-20°C	2 swing	2-0 / 2-0	25/25	22/23	24/24	27	28	87"	1/5-1/3	5/4	770/1990	325 365	

* Includes caster height. Necessary for proper installation.